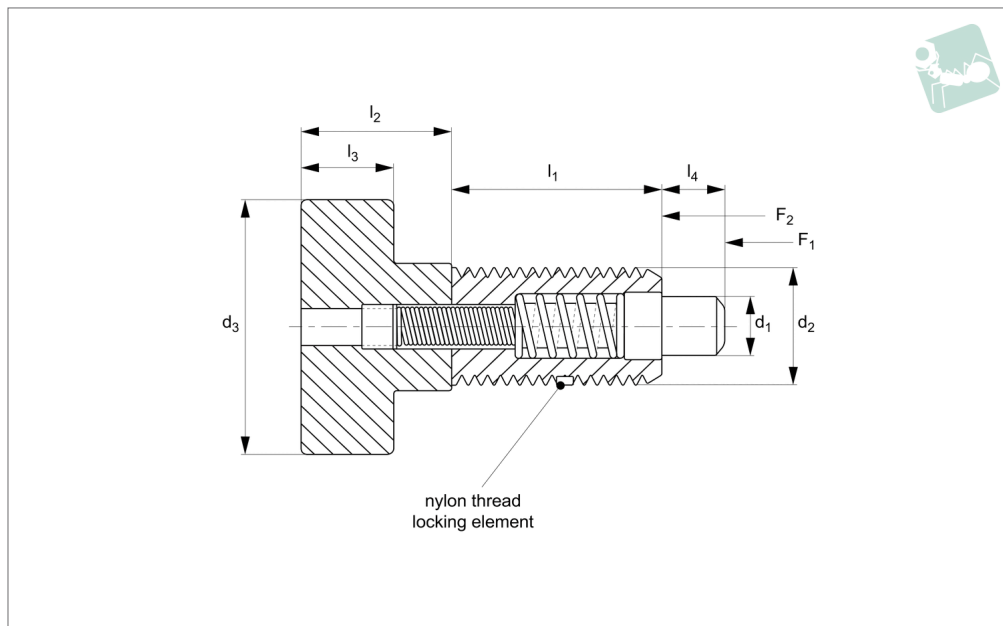




# Spring Loaded Pin - Metric - Pull Grip

non-locking - metal grip

## Spring Loaded Pins



### SL1410

SPRING LOADED PINS

#### Material

#### Steel Type-

Body, Pin and Grip: steel 12L14, zinc plate yellow chromate finish.

#### Stainless Steel Type-

Body, Pin and Grip: 303 series stainless

steel.

#### Technical Notes

Spring loaded pin is non-locking, pin simply springs back when grip released. A nylon locking element on thread reduces chance of loosening of thread due to vibra-

tion etc.

#### Tips

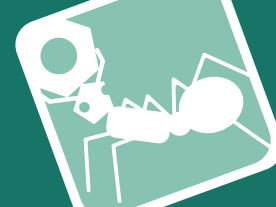
Metal grip for more robust handling. For suitable locknut, see part no. SL1810.

| Order No.        | Material  | $d_1$<br>+0.000 -0.001 | $d_2$<br>tol. 6g | $d_3$ | $l_1$ | $l_2$ | $l_3$ | $l_4$ | Spring force $f_1$<br>N | Spring force $f_2$<br>N |
|------------------|-----------|------------------------|------------------|-------|-------|-------|-------|-------|-------------------------|-------------------------|
| SL1410.M05-250-C | Steel     | 2.5                    | M 5 x 0,80       | 9     | 10    | 6     | 4     | 2     | 2.22                    | 13.35                   |
| SL1410.M06-030-C | Steel     | 3.0                    | M 6 x 1,00       | 13    | 13    | 8     | 5     | 3     | 4.45                    | 17.80                   |
| SL1410.M10-050-C | Steel     | 5.0                    | M10 x 1,50       | 19    | 19    | 13    | 8     | 6     | 4.45                    | 35.60                   |
| SL1410.M12-060-C | Steel     | 6.0                    | M12 x 1,75       | 25    | 23    | 16    | 10    | 6     | 4.45                    | 44.50                   |
| SL1410.M05-250-S | Stainless | 2.5                    | M 5 x 0,80       | 9     | 10    | 6     | 4     | 2     | 2.22                    | 13.35                   |
| SL1410.M06-030-S | Stainless | 3.0                    | M 6 x 1,00       | 13    | 13    | 8     | 5     | 3     | 4.45                    | 17.80                   |
| SL1410.M10-050-S | Stainless | 5.0                    | M10 x 1,50       | 19    | 19    | 13    | 8     | 6     | 4.45                    | 35.60                   |
| SL1410.M12-060-S | Stainless | 6.0                    | M12 x 1,75       | 25    | 23    | 16    | 10    | 6     | 4.45                    | 44.50                   |

# Spring Loaded Pins

# Spring Loaded Pin - Inch - Pull Grip

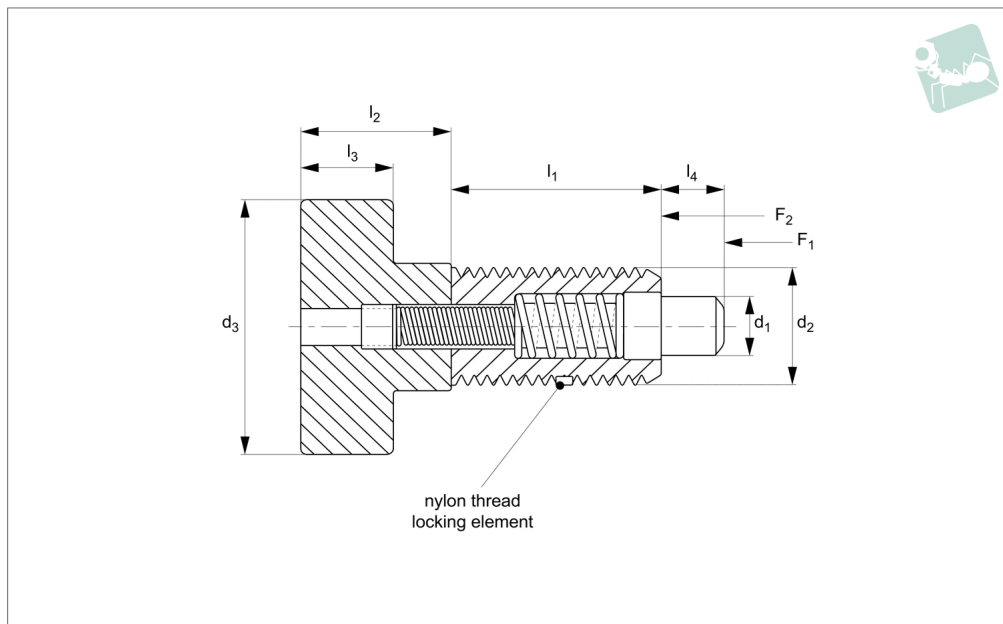
non-locking - metal grip



SPRING LOADED PINS



## SL1416



### Material

#### Steel Type-

Body, Pin and Grip: steel 12L14, zinc plate yellow chromate finish.

#### Stainless Steel Type-

Body: 300 series stainless steel.

Plunger: 300 series stainless steel.

### Technical Notes

Spring loaded pin is non-locking, pin simply springs back when grip released. A nylon locking element on thread reduces chance of loosening of thread due to vibra-

tion etc.

### Tips

Metal grip for more robust handling. For suitable locknut, see part no. SL1816.

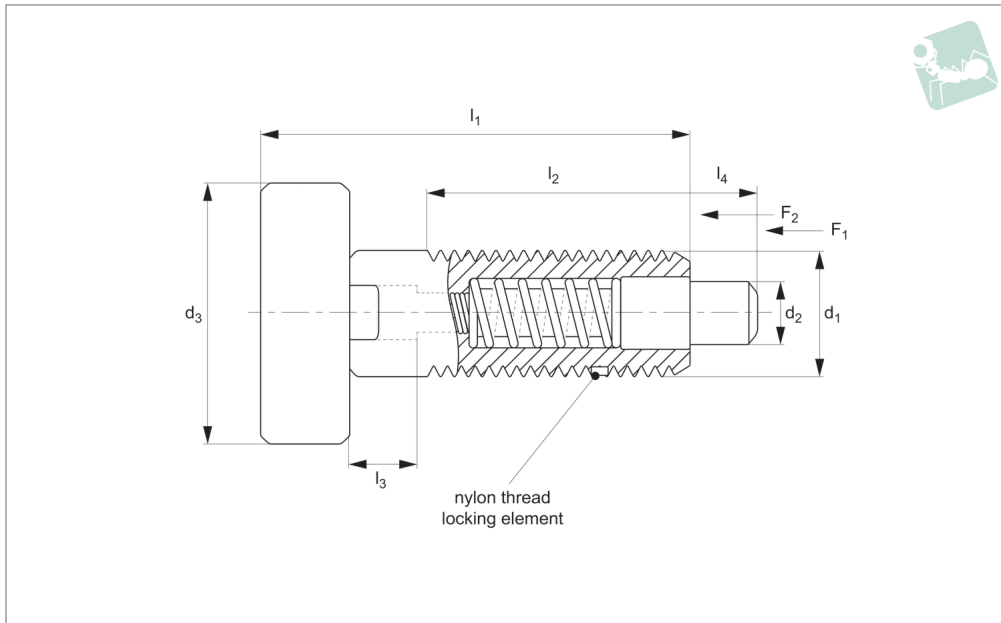
| Order No.        | Material  | $d_1$<br>+0.000 -0.0254 | $d_2$<br>UNC | $d_3$ | $l_1$ | $l_2$ | $l_3$ | $l_4$ | Spring force $f_1$<br>lb | Spring force $f_2$<br>lb | Weight<br>g |
|------------------|-----------|-------------------------|--------------|-------|-------|-------|-------|-------|--------------------------|--------------------------|-------------|
| SL1416.I19-010-C | Steel     | 0.104                   | 10-32        | 0.38  | 0.400 | 0.250 | 0.190 | 0.094 | 0.5                      | 3.00                     | 9           |
| SL1416.I25-012-C | Steel     | 0.123                   | 1/4-20       | 0.50  | 0.500 | 0.313 | 0.190 | 0.125 | 1.0                      | 4.00                     | 9           |
| SL1416.I31-015-C | Steel     | 0.154                   | 5/16-18      | 0.63  | 0.625 | 0.375 | 0.250 | 0.188 | 1.0                      | 6.00                     | 18          |
| SL1416.I37-018-C | Steel     | 0.185                   | 3/8-16       | 0.75  | 0.750 | 0.500 | 0.310 | 0.218 | 1.0                      | 8.00                     | 27          |
| SL1416.I50-024-C | Steel     | 0.248                   | 1/2-13       | 1.00  | 0.875 | 0.625 | 0.380 | 0.250 | 1.0                      | 10.0                     | 36          |
| SL1416.I19-010-S | Stainless | 0.104                   | 10-32        | 0.38  | 0.400 | 0.250 | 0.190 | 0.094 | 0.5                      | 3.00                     | 9           |
| SL1416.I25-012-S | Stainless | 0.123                   | 1/4-20       | 0.50  | 0.500 | 0.313 | 0.190 | 0.125 | 1.0                      | 4.00                     | 9           |
| SL1416.I31-015-S | Stainless | 0.154                   | 5/16-18      | 0.63  | 0.625 | 0.375 | 0.250 | 0.188 | 1.0                      | 6.00                     | 18          |
| SL1416.I37-018-S | Stainless | 0.185                   | 3/8-16       | 0.75  | 0.750 | 0.500 | 0.310 | 0.218 | 1.0                      | 8.00                     | 27          |
| SL1416.I50-024-S | Stainless | 0.248                   | 1/2-13       | 1.00  | 0.875 | 0.625 | 0.380 | 0.250 | 1.0                      | 10.0                     | 36          |



# Spring Loaded Pin - Inch - Pull Grip

locking - metal grip

# Spring Loaded Pins



## SL1418

SPRING LOADED PINS

### Material

#### Steel Type-

Body, Pin and Grip: steel 12L14, zinc plate yellow chromate finish.

#### Stainless Steel Type-

Body, Pin and Grip: 300 series stainless steel.

### Technical Notes

Spring loaded pin can be 'locked' to enable pin to be held in retracted/ non-projecting position. Pull back grip handle turn 90° to engage 'locking'.

A nylon locking element on thread reduces chance of loosening of thread due to vibra-

tion etc.

### Tips

Metal grip for more robust handling. For suitable locknut, see part no. SL1816.

| Order No.        | Material  | d <sub>1</sub><br>+0.001 -0.001 | d <sub>2</sub><br>UNC | d <sub>3</sub> | l <sub>1</sub> | l <sub>2</sub> | l <sub>3</sub> | Spring force f <sub>1</sub><br>lb | Spring force f <sub>2</sub><br>lb | Weight<br>g |
|------------------|-----------|---------------------------------|-----------------------|----------------|----------------|----------------|----------------|-----------------------------------|-----------------------------------|-------------|
| SL1418.I25-012-C | Steel     | 0.12                            | 1/4-20                | 0.50           | 0.80           | 0.400          | 0.125          | 0.50                              | 2.0                               | 9           |
| SL1418.I37-018-C | Steel     | 0.18                            | 3/8-16                | 0.75           | 1.26           | 0.750          | 0.220          | 0.50                              | 3.0                               | 27          |
| SL1418.I50-024-C | Steel     | 0.24                            | 1/2-13                | 1.00           | 1.38           | 0.650          | 0.250          | 0.50                              | 4.0                               | 36          |
| SL1418.I25-012-S | Stainless | 0.12                            | 1/4-20                | 0.50           | 0.80           | 0.400          | 0.125          | 0.50                              | 2.0                               | 9           |
| SL1418.I37-018-S | Stainless | 0.18                            | 3/8-16                | 0.75           | 1.26           | 0.750          | 0.220          | 0.50                              | 3.0                               | 27          |
| SL1418.I50-024-S | Stainless | 0.24                            | 1/2-13                | 1.00           | 1.38           | 0.650          | 0.250          | 0.50                              | 4.0                               | 36          |

# Spring Loaded Pins

# Spring Loaded Pin - Inch - Pull Grip

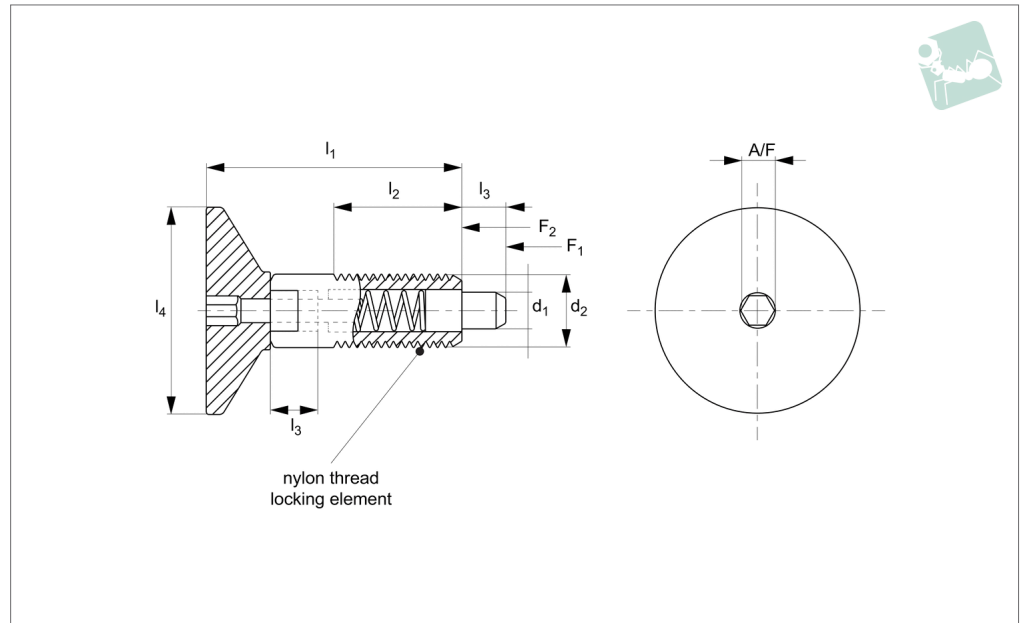
locking - metal grip



SPRING LOADED PINS



**SL1419**



**Material**

Body, Pin and Grip: Steel 12L14, zinc gold chromate finish.

**Technical Notes**

Spring loaded pin can be 'locked' to enable

pin to be held in retracted/ non-projecting position. Pull back grip handle turn 90° to engage 'locking'.

A nylon locking element on thread reduces chance of loosening of thread due to vibra-

tion etc.

**Tips**

Metal grip has recessed hex to improve ease of installation.

For suitable locknut, see part no. SL1816.

| Order No.               | Material | d <sub>1</sub> | d <sub>2</sub><br>UNC | l <sub>1</sub> | l <sub>2</sub> | l <sub>3</sub> | l <sub>4</sub> | A/F   | Spring force f <sub>1</sub><br>lb | Spring force f <sub>2</sub><br>lb |
|-------------------------|----------|----------------|-----------------------|----------------|----------------|----------------|----------------|-------|-----------------------------------|-----------------------------------|
| <b>SL1419.I25-012-Z</b> | Steel    | 0.123          | 1/4-20                | 0.805          | 0.40           | 0.125          | 0.750          | 0.125 | 1                                 | 4                                 |
| <b>SL1419.I31-015-Z</b> | Steel    | 0.154          | 5/16-18               | 1.070          | 0.53           | 0.187          | 0.875          | 0.125 | 1                                 | 6                                 |
| <b>SL1419.I37-018-Z</b> | Steel    | 0.185          | 3/8-16                | 1.260          | 0.75           | 0.220          | 1.000          | 0.218 | 1                                 | 8                                 |
| <b>SL1419.I50-024-Z</b> | Steel    | 0.248          | 1/2-13                | 1.380          | 0.65           | 0.250          | 1.250          | 0.250 | 1                                 | 10                                |