

N0053.73N

NYLON

Material

Nylon 66 (PA 6/66), standard, natural.

Technical Notes

DIN norms were created for metal parts, the dimensions of our plastic DIN equivalents are close to the norm but do not

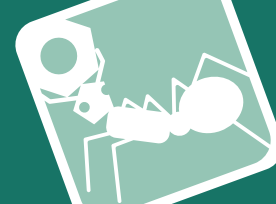
follow the strict tolerances typically relevant to metal parts.

Many Nylon parts are available in dyed black, this subject to a minimum value and process charge, please contact us for further details.

Dyed black colour is not long term UV stable. Nylon parts offer good electrical insulation, is resistant to corrosion and most dilute acids.

Nylon protects work surfaces and absorbs shocks and vibrations.

| Order No. | Head type | d ₁ | l ₁ | d ₂ max. | h ₁ max. | w ₁ nom. | Material | Grade | Finish |
|------------------|-----------|----------------|----------------|------------------------|------------------------|------------------------|----------|-------|---------|
| 73N.040.0060.0AD | Standard | M 4 | 6 | 10.0 | 2.2 | 1.2 | PA-6/66 | Std. | Natural |
| 73N.040.0080.0AD | Standard | M 4 | 8 | 10.0 | 2.2 | 1.2 | PA-6/66 | Std. | Natural |
| 73N.040.0100.0AD | Standard | M 4 | 10 | 10.0 | 2.2 | 1.2 | PA-6/66 | Std. | Natural |
| 73N.040.0120.0AD | Standard | M 4 | 12 | 10.0 | 2.2 | 1.2 | PA-6/66 | Std. | Natural |
| 73N.040.0160.0AD | Standard | M 4 | 16 | 10.0 | 2.2 | 1.2 | PA-6/66 | Std. | Natural |
| 73N.040.0200.0AD | Standard | M 4 | 20 | 10.0 | 2.2 | 1.2 | PA-6/66 | Std. | Natural |
| 73N.040.0250.0AD | Standard | M 4 | 25 | 10.0 | 2.2 | 1.2 | PA-6/66 | Std. | Natural |
| 73N.050.0060.0AD | Standard | M 5 | 6 | 12.5 | 2.7 | 1.2 | PA-6/66 | Std. | Natural |
| 73N.050.0080.0AD | Standard | M 5 | 8 | 12.5 | 2.7 | 1.2 | PA-6/66 | Std. | Natural |
| 73N.050.0100.0AD | Standard | M 5 | 10 | 12.5 | 2.7 | 1.2 | PA-6/66 | Std. | Natural |
| 73N.050.0120.0AD | Standard | M 5 | 12 | 12.5 | 2.7 | 1.2 | PA-6/66 | Std. | Natural |
| 73N.050.0150.0AD | Standard | M 5 | 15 | 12.5 | 2.7 | 1.2 | PA-6/66 | Std. | Natural |
| 73N.050.0160.0AD | Standard | M 5 | 16 | 12.5 | 2.7 | 1.2 | PA-6/66 | Std. | Natural |
| 73N.050.0170.0AD | Standard | M 5 | 17 | 12.5 | 2.7 | 1.2 | PA-6/66 | Std. | Natural |
| 73N.050.0200.0AD | Standard | M 5 | 20 | 12.5 | 2.7 | 1.2 | PA-6/66 | Std. | Natural |
| 73N.050.0250.0AD | Standard | M 5 | 20 | 12.5 | 2.7 | 1.2 | PA-6/66 | Std. | Natural |
| 73N.050.0300.0AD | Standard | M 5 | 30 | 12.5 | 2.7 | 1.2 | PA-6/66 | Std. | Natural |
| 73N.050.0350.0AD | Standard | M 5 | 35 | 12.5 | 2.7 | 1.2 | PA-6/66 | Std. | Natural |
| 73N.050.0400.0AD | Standard | M 5 | 40 | 12.5 | 2.7 | 1.2 | PA-6/66 | Std. | Natural |
| 73N.050.0450.0AD | Standard | M 5 | 45 | 12.5 | 2.7 | 1.2 | PA-6/66 | Std. | Natural |
| 73N.050.0500.0AD | Standard | M 5 | 50 | 12.5 | 2.7 | 1.2 | PA-6/66 | Std. | Natural |
| 73N.050.0550.0AD | Standard | M 5 | 55 | 12.5 | 2.7 | 1.2 | PA-6/66 | Std. | Natural |
| 73N.050.0600.0AD | Standard | M 5 | 60 | 12.5 | 2.7 | 1.2 | PA-6/66 | Std. | Natural |
| 73N.050.0650.0AD | Standard | M 5 | 65 | 12.5 | 2.7 | 1.2 | PA-6/66 | Std. | Natural |
| 73N.050.0700.0AD | Standard | M 5 | 70 | 12.5 | 2.7 | 1.2 | PA-6/66 | Std. | Natural |
| 73N.060.0060.0AD | Standard | M 6 | 6 | 15.0 | 3.3 | 1.6 | PA-6/66 | Std. | Natural |
| 73N.060.0080.0AD | Standard | M 6 | 8 | 15.0 | 3.3 | 1.6 | PA-6/66 | Std. | Natural |
| 73N.060.0100.0AD | Standard | M 6 | 10 | 15.0 | 3.3 | 1.6 | PA-6/66 | Std. | Natural |
| 73N.060.0120.0AD | Standard | M 6 | 12 | 15.0 | 3.3 | 1.6 | PA-6/66 | Std. | Natural |
| 73N.060.0150.0AD | Standard | M 6 | 15 | 15.0 | 3.3 | 1.6 | PA-6/66 | Std. | Natural |
| 73N.060.0160.0AD | Standard | M 6 | 16 | 15.0 | 3.3 | 1.6 | PA-6/66 | Std. | Natural |



| Order No. | Head type | d ₁ | l ₁ | d ₂ max. | h ₁ max. | w ₁ nom. | Material | Grade | Finish |
|------------------|-----------|----------------|----------------|------------------------|------------------------|------------------------|----------|-------|---------|
| 73N.060.0170.OAD | Standard | M 6 | 17 | 15.0 | 3.3 | 1.6 | PA-6/66 | Std. | Natural |
| 73N.060.0200.OAD | Standard | M 6 | 20 | 15.0 | 3.3 | 1.6 | PA-6/66 | Std. | Natural |
| 73N.060.0250.OAD | Standard | M 6 | 25 | 15.0 | 3.3 | 1.6 | PA-6/66 | Std. | Natural |
| 73N.060.0300.OAD | Standard | M 6 | 30 | 15.0 | 3.3 | 1.6 | PA-6/66 | Std. | Natural |
| 73N.060.0350.OAD | Standard | M 6 | 35 | 15.0 | 3.3 | 1.6 | PA-6/66 | Std. | Natural |
| 73N.060.0400.OAD | Standard | M 6 | 40 | 15.0 | 3.3 | 1.6 | PA-6/66 | Std. | Natural |
| 73N.060.0450.OAD | Standard | M 6 | 45 | 15.0 | 3.3 | 1.6 | PA-6/66 | Std. | Natural |
| 73N.060.0500.OAD | Standard | M 6 | 50 | 15.0 | 3.3 | 1.6 | PA-6/66 | Std. | Natural |
| 73N.060.0550.OAD | Standard | M 6 | 55 | 15.0 | 3.3 | 1.6 | PA-6/66 | Std. | Natural |
| 73N.060.0600.OAD | Standard | M 6 | 60 | 15.0 | 3.3 | 1.6 | PA-6/66 | Std. | Natural |
| 73N.060.0650.OAD | Standard | M 6 | 65 | 15.0 | 3.3 | 1.6 | PA-6/66 | Std. | Natural |
| 73N.060.0700.OAD | Standard | M 6 | 70 | 15.0 | 3.3 | 1.6 | PA-6/66 | Std. | Natural |
| 73N.060.0750.OAD | Standard | M 6 | 75 | 15.0 | 3.3 | 1.6 | PA-6/66 | Std. | Natural |
| 73N.060.0800.OAD | Standard | M 6 | 80 | 15.0 | 3.3 | 1.6 | PA-6/66 | Std. | Natural |
| 73N.080.0060.OAD | Shallow | M 8 | 6 | - | - | - | PA-6/66 | Std. | Natural |
| 73N.080.0080.OAD | Shallow | M 8 | 8 | - | - | - | PA-6/66 | Std. | Natural |
| 73N.080.0100.OAD | Shallow | M 8 | 10 | - | - | - | PA-6/66 | Std. | Natural |
| 73N.080.0120.OAD | Shallow | M 8 | 12 | - | - | - | PA-6/66 | Std. | Natural |
| 73N.080.0160.OAD | Shallow | M 8 | 16 | - | - | - | PA-6/66 | Std. | Natural |
| 73N.080.0160.OAB | Shallow | M 8 | 16 | - | - | - | PA-6/66 | Std. | Natural |
| 73N.080.0200.OAD | Shallow | M 8 | 20 | - | - | - | PA-6/66 | Std. | Natural |
| 73N.080.0250.OAD | Shallow | M 8 | 25 | - | - | - | PA-6/66 | Std. | Natural |
| 73N.080.0300.OAD | Shallow | M 8 | 30 | - | - | - | PA-6/66 | Std. | Natural |
| 73N.080.0350.OAD | Shallow | M 8 | 35 | - | - | - | PA-6/66 | Std. | Natural |
| 73N.080.0400.OAD | Shallow | M 8 | 40 | - | - | - | PA-6/66 | Std. | Natural |
| 73N.080.0450.OAD | Shallow | M 8 | 45 | - | - | - | PA-6/66 | Std. | Natural |
| 73N.080.0500.OAD | Shallow | M 8 | 50 | - | - | - | PA-6/66 | Std. | Natural |
| 73N.080.0600.OAD | Shallow | M 8 | 60 | - | - | - | PA-6/66 | Std. | Natural |
| 73N.080.0700.OAD | Shallow | M 8 | 70 | - | - | - | PA-6/66 | Std. | Natural |
| 73N.080.0750.OAD | Shallow | M 8 | 75 | - | - | - | PA-6/66 | Std. | Natural |
| 73N.080.0800.OAD | Shallow | M 8 | 80 | - | - | - | PA-6/66 | Std. | Natural |
| 73N.080.0850.OAD | Shallow | M 8 | 85 | - | - | - | PA-6/66 | Std. | Natural |
| 73N.080.0900.OAD | Shallow | M 8 | 90 | - | - | - | PA-6/66 | Std. | Natural |
| 73N.080.0950.OAD | Shallow | M 8 | 95 | - | - | - | PA-6/66 | Std. | Natural |
| 73N.080.1000.OAD | Shallow | M 8 | 100 | - | - | - | PA-6/66 | Std. | Natural |
| 73N.080.1100.OAD | Shallow | M 8 | 110 | - | - | - | PA-6/66 | Std. | Natural |
| 73N.080.1200.OAD | Shallow | M 8 | 120 | - | - | - | PA-6/66 | Std. | Natural |
| 73N.080.1300.OAD | Shallow | M 8 | 130 | - | - | - | PA-6/66 | Std. | Natural |
| 73N.100.0060.OAD | Shallow | M10 | 6 | - | - | - | PA-6/66 | Std. | Natural |
| 73N.100.0080.OAD | Shallow | M10 | 8 | - | - | - | PA-6/66 | Std. | Natural |
| 73N.100.0100.OAD | Shallow | M10 | 10 | - | - | - | PA-6/66 | Std. | Natural |
| 73N.100.0120.OAD | Shallow | M10 | 12 | - | - | - | PA-6/66 | Std. | Natural |
| 73N.100.0160.OAD | Shallow | M10 | 16 | - | - | - | PA-6/66 | Std. | Natural |
| 73N.100.0200.OAD | Shallow | M10 | 20 | - | - | - | PA-6/66 | Std. | Natural |
| 73N.100.0250.OAD | Shallow | M10 | 25 | - | - | - | PA-6/66 | Std. | Natural |
| 73N.100.0300.OAD | Shallow | M10 | 30 | - | - | - | PA-6/66 | Std. | Natural |
| 73N.100.0350.OAD | Shallow | M10 | 35 | - | - | - | PA-6/66 | Std. | Natural |
| 73N.100.0400.OAD | Shallow | M10 | 40 | - | - | - | PA-6/66 | Std. | Natural |
| 73N.100.0450.OAD | Shallow | M10 | 45 | - | - | - | PA-6/66 | Std. | Natural |
| 73N.100.0500.OAD | Shallow | M10 | 50 | - | - | - | PA-6/66 | Std. | Natural |
| 73N.100.0600.OAD | Shallow | M10 | 60 | - | - | - | PA-6/66 | Std. | Natural |
| 73N.100.0700.OAD | Shallow | M10 | 70 | - | - | - | PA-6/66 | Std. | Natural |
| 73N.100.0750.OAD | Shallow | M10 | 75 | - | - | - | PA-6/66 | Std. | Natural |
| 73N.100.0800.OAD | Shallow | M10 | 80 | - | - | - | PA-6/66 | Std. | Natural |
| 73N.100.0850.OAD | Shallow | M10 | 85 | - | - | - | PA-6/66 | Std. | Natural |
| 73N.100.0900.OAD | Shallow | M10 | 90 | - | - | - | PA-6/66 | Std. | Natural |
| 73N.100.0950.OAD | Shallow | M10 | 95 | - | - | - | PA-6/66 | Std. | Natural |
| 73N.100.1000.OAD | Shallow | M10 | 100 | - | - | - | PA-6/66 | Std. | Natural |
| 73N.100.1100.OAD | Shallow | M10 | 110 | - | - | - | PA-6/66 | Std. | Natural |
| 73N.100.1200.OAD | Shallow | M10 | 120 | - | - | - | PA-6/66 | Std. | Natural |
| 73N.100.1300.OAD | Shallow | M10 | 130 | - | - | - | PA-6/66 | Std. | Natural |
| 73N.120.0100.OAD | Shallow | M12 | 10 | - | - | - | PA-6/66 | Std. | Natural |
| 73N.120.0120.OAD | Shallow | M12 | 12 | - | - | - | PA-6/66 | Std. | Natural |
| 73N.120.0160.OAD | Shallow | M12 | 16 | - | - | - | PA-6/66 | Std. | Natural |
| 73N.120.0200.OAD | Shallow | M12 | 20 | - | - | - | PA-6/66 | Std. | Natural |
| 73N.120.0250.OAD | Shallow | M12 | 25 | - | - | - | PA-6/66 | Std. | Natural |
| 73N.120.0300.OAD | Shallow | M12 | 30 | - | - | - | PA-6/66 | Std. | Natural |
| 73N.120.0350.OAD | Shallow | M12 | 35 | - | - | - | PA-6/66 | Std. | Natural |



Slot Mushroom Machine Screws

Nylon

| Order No. | Head type | d ₁ | l ₁ | d ₂ max. | h ₁ max. | w ₁ nom. | Material | Grade | Finish |
|------------------|-----------|----------------|----------------|------------------------|------------------------|------------------------|----------|-------|---------|
| 73N.120.0400.0AD | Shallow | M12 | 40 | - | - | - | PA-6/66 | Std. | Natural |
| 73N.120.0450.0AD | Shallow | M12 | 45 | - | - | - | PA-6/66 | Std. | Natural |
| 73N.120.0500.0AD | Shallow | M12 | 50 | - | - | - | PA-6/66 | Std. | Natural |
| 73N.120.0600.0AD | Shallow | M12 | 60 | - | - | - | PA-6/66 | Std. | Natural |
| 73N.120.0700.0AD | Shallow | M12 | 70 | - | - | - | PA-6/66 | Std. | Natural |
| 73N.120.0750.0AD | Shallow | M12 | 75 | - | - | - | PA-6/66 | Std. | Natural |
| 73N.120.0800.0AD | Shallow | M12 | 80 | - | - | - | PA-6/66 | Std. | Natural |
| 73N.120.0850.0AD | Shallow | M12 | 85 | - | - | - | PA-6/66 | Std. | Natural |
| 73N.120.0900.0AD | Shallow | M12 | 90 | - | - | - | PA-6/66 | Std. | Natural |
| 73N.120.0950.0AD | Shallow | M12 | 95 | - | - | - | PA-6/66 | Std. | Natural |
| 73N.120.1000.0AD | Shallow | M12 | 100 | - | - | - | PA-6/66 | Std. | Natural |
| 73N.120.1100.0AD | Shallow | M12 | 110 | - | - | - | PA-6/66 | Std. | Natural |
| 73N.120.1200.0AD | Shallow | M12 | 120 | - | - | - | PA-6/66 | Std. | Natural |
| 73N.120.1300.0AD | Shallow | M12 | 130 | - | - | - | PA-6/66 | Std. | Natural |

NYLON